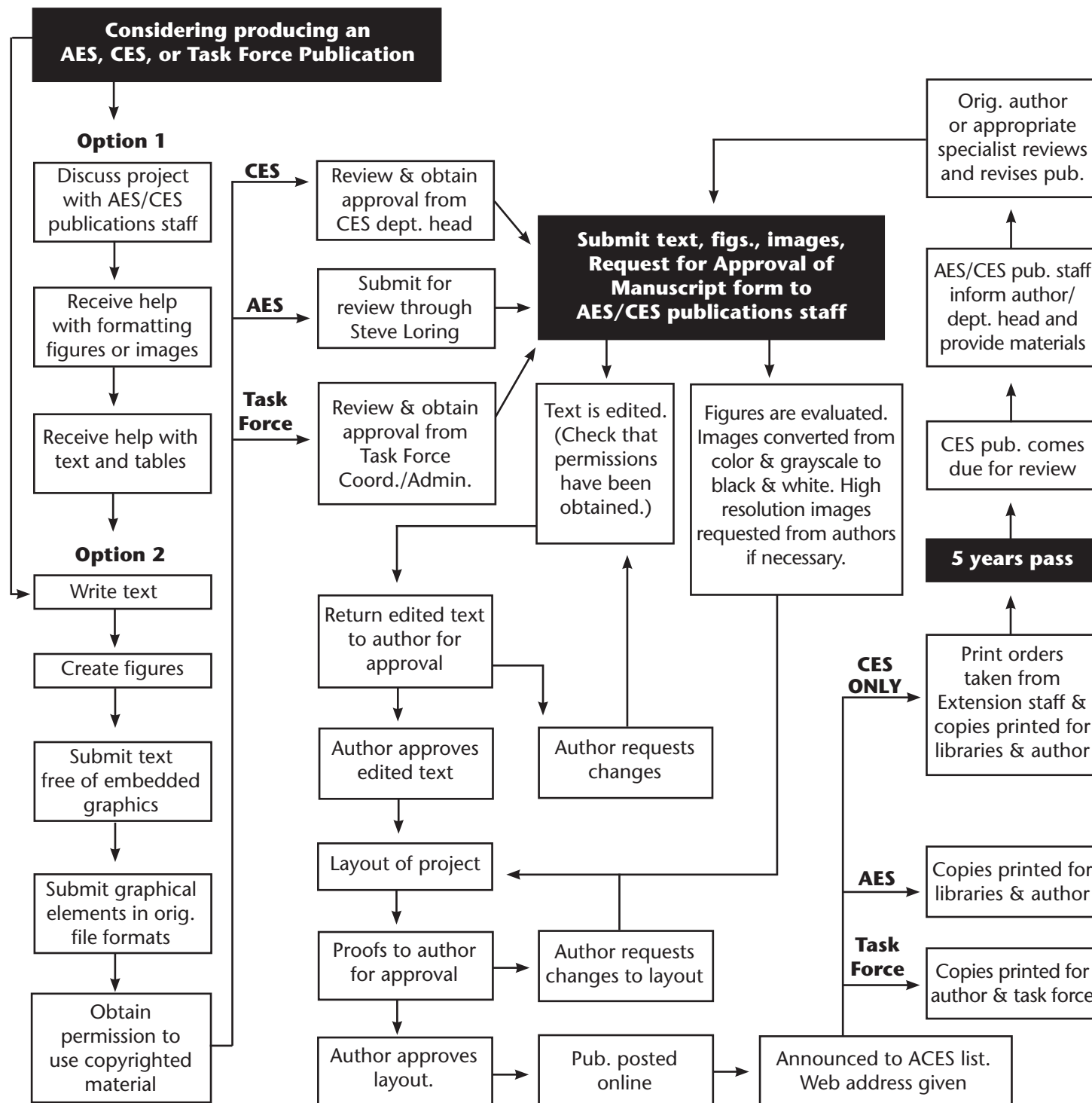


AES/CES Publications Submission & Production Procedures



Marketing Services: AES/CES Publications

Ana Henke
Outreach Educational Publications Supervisor
575-646-1174, fax: 575-646-2702
ahenke@nmsu.edu

Peggy Chapman
Assistant Graphic Designer
575-646-7559, fax: 575-646-2702
pchapman@nmsu.edu

Susan Portillo
Graphic Designer
575-646-1140, fax: 575-646-2702
sbportil@nmsu.edu

Frank Sholedice
Outreach Educational Publications Assistant Editor
575-646-1163, fax: 575-646-2702
harpua@nmsu.edu

Amy Smith
Outreach Educational Publications Assistant Editor
575-646-5511, fax: 575-646-2702
smiamy@nmsu.edu

Nick Teixeira
Assistant Graphic Designer
575-646-6397, fax: 575-646-2702
nteixeir@nmsu.edu

Additional Important Contacts

Jon Boren
CES, Associate Dean & Director
575-646-3015, fax: 575-646-7042
jboren@nmsu.edu

Terrell "Red" Baker
Interim Range Improvement Task Force Coordinator
575-646-5102, fax: 575-646-5441
ttbaker@nmsu.edu

Jaye Hawkins
New Mexico Chile Association Administrator
575-646-7861, fax: 575-646-5975
jayeh@nmsu.edu

Steve Loring
AES Associate Director
575-646-1464, fax: 575-646-2816
sloring@nmsu.edu

Craig Runyan
Water Task Force Coordinator
575-646-1131, fax: 575-646-8085